



**ROCHESTER PHILHARMONIC ORCHESTRA | 100**

Embracing The Eclipse:  
RPO's Sensory-Friendly Concert

# **SOCIAL NARRATIVE**



---

April 6, 2024 | Saturday

2:00 PM

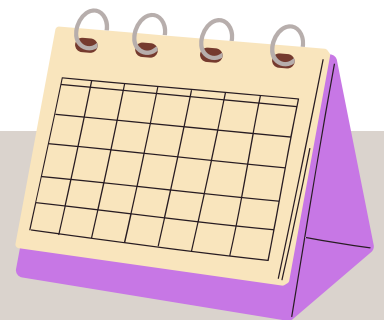
Hochstein Performance Hall

S O C I A L   N A R R A T I V E

# Concert Day



I am going to The Hochstein School to see the sensory-friendly concert on Saturday, April 6th 2024 at 2PM.



S O C I A L   N A R R A T I V E

# Dress Code

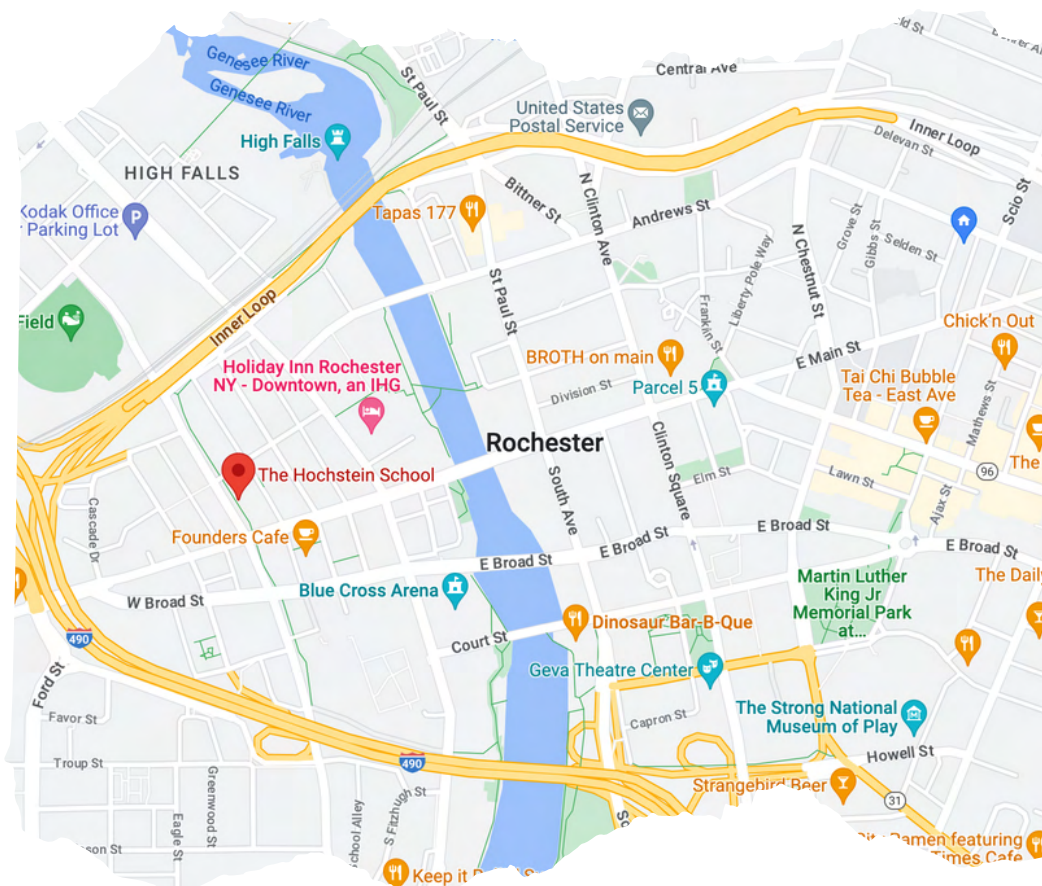


There is no dress code for the sensory-friendly concert. We can wear whatever makes us feel comfortable.



## SOCIAL NARRATIVE

# Getting There



The Hochstein School is located at 50 N Plymouth Ave, Rochester, NY 14614.

I can get to The Hochstein School with my family by driving, or by riding the bus. If I have to cross the street, I will make sure to hold hands with a family member or friend.





S O C I A L   N A R R A T I V E

# Arriving



If my family is driving us, we may park at the parking lot next to The Hochstein School on Plymouth Avenue.



## SOCIAL NARRATIVE

# Arriving



If my family is driving us, we may also park in the garage on Fitzhugh Street.





## SOCIAL NARRATIVE

# Going in



When we arrive, we will enter the lobby.

We may need to wait in line. If we have any questions, there will be people to help us.

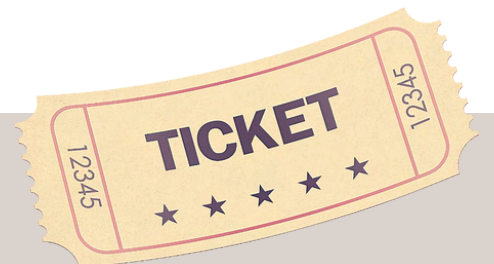


## SOCIAL NARRATIVE

# Tickets



We may already have our tickets, or we may have to wait in line in the lobby to get them.





## SOCIAL NARRATIVE

# Ushers



A person called an usher will welcome us into the hall.  
Ushers can help me find my way to the hall or help me find a seat.  
The ushers wear uniforms and name tags.





## S O C I A L   N A R R A T I V E

# Bathrooms



Before the concert, I can use the bathroom.

I will be able to find them in the hallways outside the performance hall.

I may have to wait my turn to use the bathroom.



## SOCIAL NARRATIVE

# Entering the Hall



This is the entrance of the performance hall.  
When I'm ready, I can go into the hall.

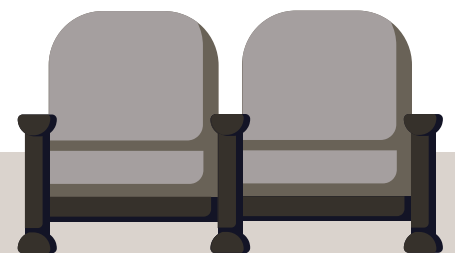


S O C I A L   N A R R A T I V E

# Finding Your Seat



When I'm ready, I can find my seat inside the hall.  
There are a lot of seats in the hall.



S O C I A L   N A R R A T I V E

# Bringing Snacks



We may bring snacks to eat and drink, but they are not allowed in the hall.





## S O C I A L   N A R R A T I V E

# Bringing Toys



We can bring any fidget toys, stuffed animals, tablets, or anything else we would like to have with us at the concert.





S O C I A L   N A R R A T I V E

# At the Concert



I will see other families at the concert.



## SOCIAL NARRATIVE

# Conductor



The conductor will walk onto the stage at the start of the concert. They help the musicians play together as a group. Some of the audience members may clap for the conductor. If I want to clap, I can clap too.





## SOCIAL NARRATIVE

# Concert Time!



Once the conductor is on the podium, the musicians will start playing the concert. If the music is too loud for me, it is alright for me to cover my ears or move to another seat that is farther from the stage.



## S O C I A L   N A R R A T I V E

# Too Loud?



I can also bring my own noise reducing headphones.  
If I forget them, there will be some there that I can borrow.



S O C I A L   N A R R A T I V E

# Clapping



When each piece is over, the audience will clap for the musicians and the conductor. If I want to clap, I can clap, too.





## S O C I A L   N A R R A T I V E

# Quiet Room



If I need a break at any point during the concert, I can go out into the hallway or to the Quiet Room. An usher or volunteer will be happy to show me where the Quiet Room is located.



S O C I A L   N A R R A T I V E

# End of Concert



Now that the concert is over, it's time to leave.  
I will follow my family as we leave the hall.





SOCIAL NARRATIVE

# Coming Back



I hope I can listen to the Rochester Philharmonic Orchestra perform again!

